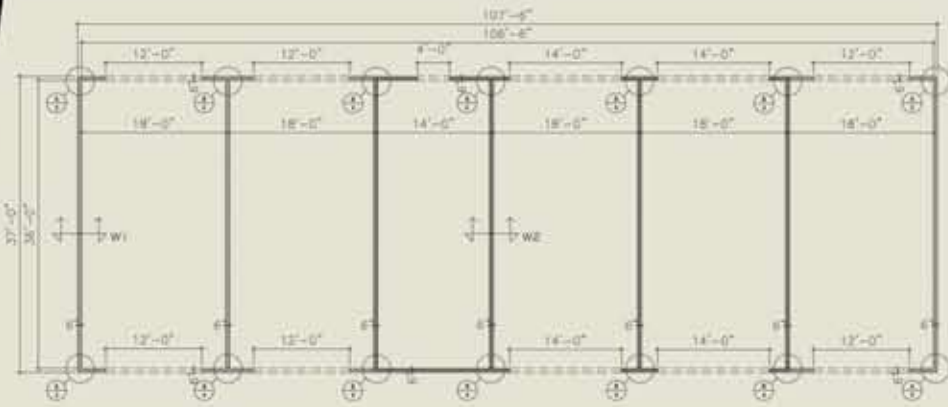




I chose to build an Octaform car wash four years ago, and it still looks like the day it was built. The walls are waterproof and durable, low maintenance and easy to clean. I like the Octaform System so much I've chosen to build my next car wash with it as well.

Dan Curtis
Winland Car Wash, Gillette, Wyoming



LEGEND:

- WALL 1: 8" Flat / Flat, White, 12' High, Uninsulated, No girth
- WALL 2: 4" Flat / Flat, White, 10' High, Uninsulated, No girth, 1/2" Braces @ 4' oc

- NOTES:
- FORMS TO BE PLACED ON SMOOTH FLAT SURFACE.
 - REMOVE ALL DEBRIS AND IN PLACE PRIOR TO PLACING CONCRETE.
 - WALL FORMS ARE ASSEMBLED DETACHED AND MAY BEY UNITS.
 - SEE DETAILS FOR BRACE AND PROP LOCATIONS USED IN WALLS.
 - OCTAFORM RECOMMENDS CONCRETE PLACEMENT RATE.
 - AVAILABLE 1/2" VERTICAL REINFORCEMENT NOT TO EXCEED 18" ON CENTER.
 - REBAR SIZE AND SPACING AS PER STRUCTURAL DRAWINGS.
 - OCTAFORM SYSTEM PROVIDES REBAR BRACING HORIZONTALLY WITHIN THE CENTRAL HOLD OR A REPEAT, VERTICALLY OR A REPEAT, SIDEWALLS OR A REPEAT.

Designed to meet your specific project requirements



Flat-stacking components for cost-effective shipping and storage



Onsite training available

Octaform Systems Inc.

Head Office
Suite 520 - 885 Dunsmuir Street
Vancouver BC Canada V6C 1N5
T 604-408-0558
Toll Free 1-888-866-6522
F 604-408-0595

info@octaform.com
www.octaform.com

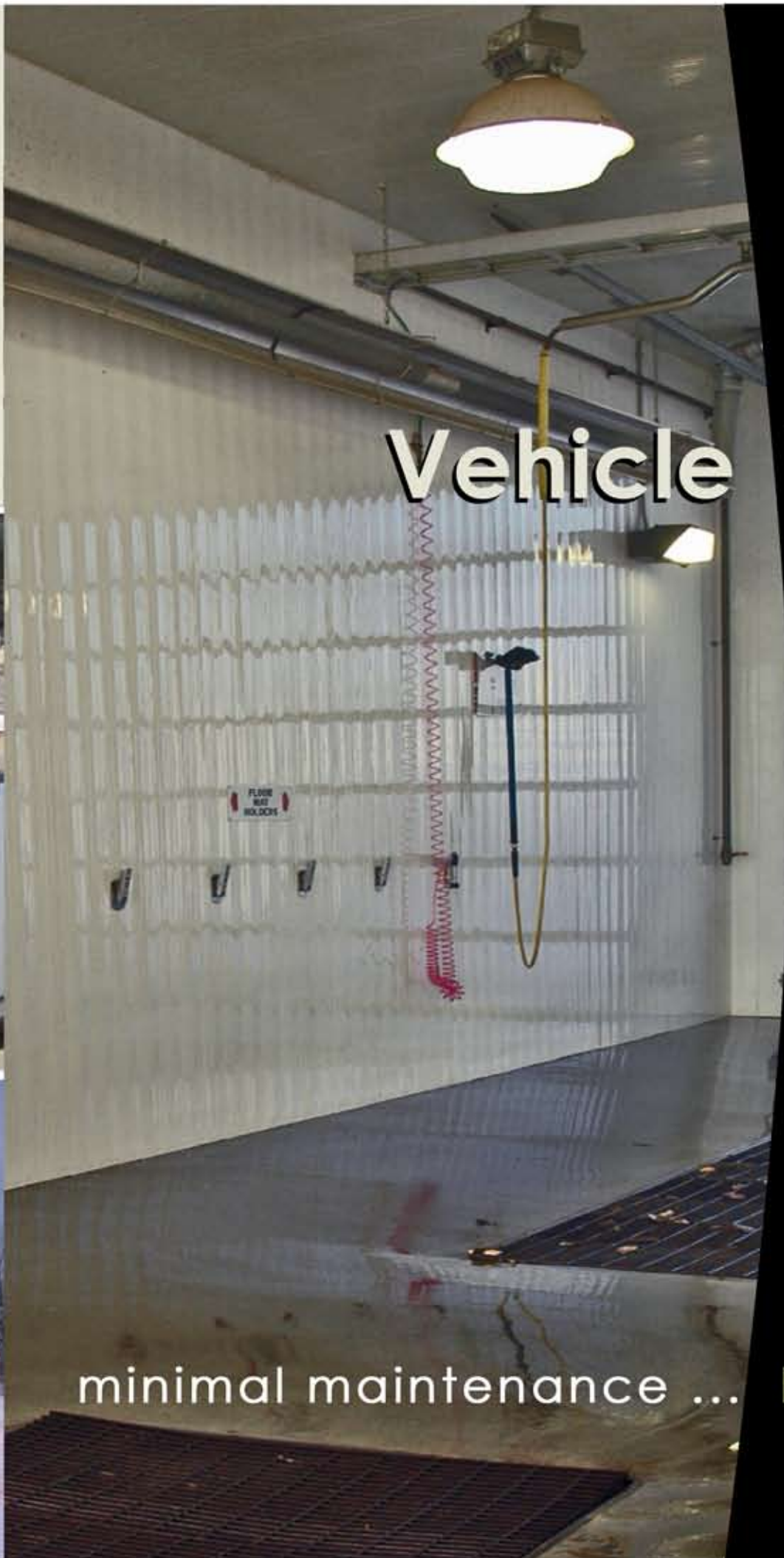
All Octaform™ components are recyclable.



Printed in Canada on recycled paper.



Superior finish and reliability



Vehicle Wash



minimal maintenance ... highly durable

how much

do your vehicle wash walls cost you?



Wood rots.
Metal rusts.
CMU attracts mold.

Your investment dollars deserve the best.

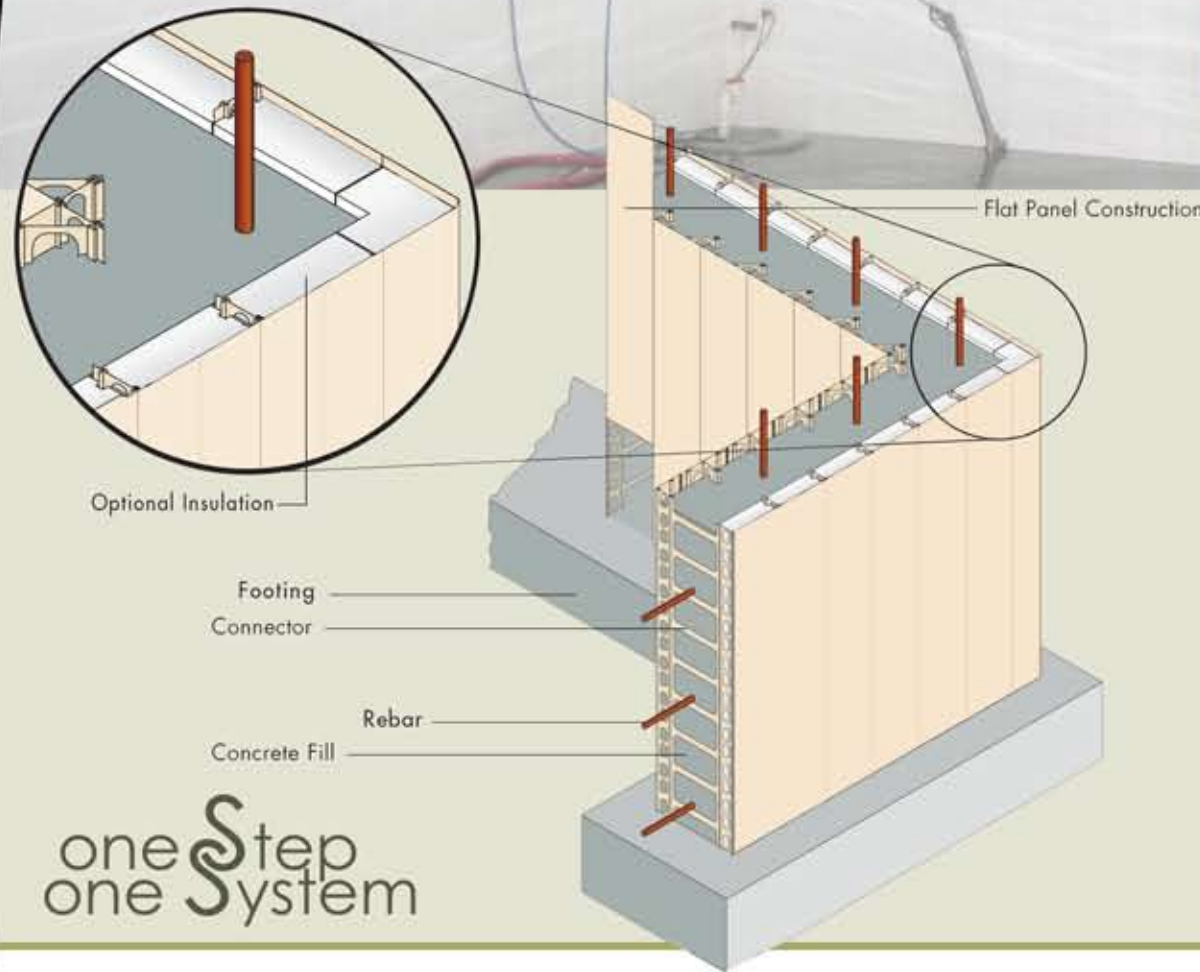
Introducing...



Octaform Finished Forming Systems provide unparalleled design and engineering flexibility that surpasses that of any other forming system. What makes the Octaform system unique is that it is a concrete wall and finished wall surface, constructed in one step, one system. No sealing or finishing required.

- Unlimited design flexibility
- Reduce maintenance costs
- Optional insulation for "R" & "U" value energy savings and efficiency
- One step, one system increased durability
- Reduced shipping costs
- Shortened construction schedule
- 2 hour fire safety rating (ASTM, CAN/ULC approved)

We recommend the Octaform Finished Forming System or Octaform Finished Linings with Original Finished Panels for vehicle wash construction. For more information on our Finished Linings and Finished Panel products visit www.octaform.com



one Step
one System



- Interiors are bright and clean and will provide decades of reliability
- PVC finished panels protect concrete and reinforcing steel from harsh cleaning chemicals
- No additional painting, sealants or coatings required
- Complete design versatility - straight or curved walls of any thickness
- Optional insulation can be incorporated into the wall to any specified R-value
- Octaform assembly can be quickly learned by any crew with construction experience
- Octaform components ship flat reducing transportation costs. We ship worldwide

An Octaform wash will continue to look as new as the day it was built for many years to come, providing decades of reliability and a pleasant, clean vehicle wash experience to your customers.

