

# TempWall

by **trusscore**



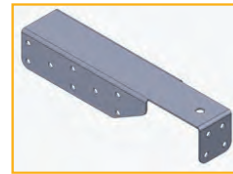
## Installation Guide

### The system has:

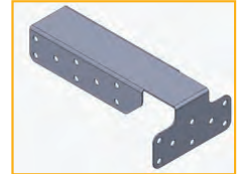
- 1 x Fully assembled wall  
The pre-assembled wall section is 60" wide x 80" high x 1-3/8" thick (152.4 cm x 203.2 cm x 3.49 cm) and weighs 50 lbs (22.68 kg)
- 2 x Foot plates (a)
- 2 x U-style top/bottom clips (b)
- 2 x T-style top/bottom clips (c)
- 20 x Stainless steel screws



(a)



(b)



(c)

### Tools required:

- A cordless drill with a #2 Robertson or #2 Phillips bit.

**Assembly:** It will take 1 minute to assemble a stand-alone configuration, and approximately 5-10 minutes for a U-shape configuration.

Installation video available at [trusscore.com/tempwall](http://trusscore.com/tempwall)

**Step 1:** Start with the back panel, rotate it on its side for better vision while installing the feet.

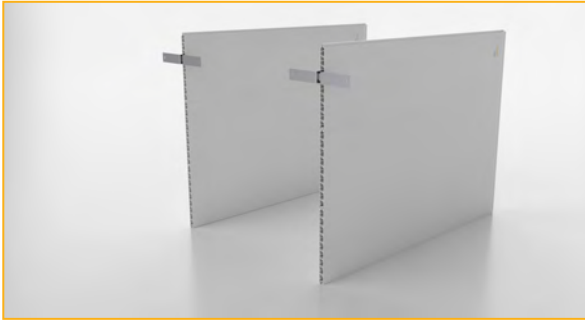


**Step 2:** Use 2 Foot plates that will slide into the bottom of the wall; You now have your back wall completed.

- All back walls will use 2 Foot plates.



**Step 3:** For the sidewall, use one Foot plate and one TempWall. Slide the Foot plate in near the front of the panel. Avoid placement around the seam. The walls are now ready to be fastened together.



**Step 4:** Join the walls together by butting the ends and attaching the U-clips at both the top and the bottom of the wall; Use a minimum of 4 screws per U-clip;

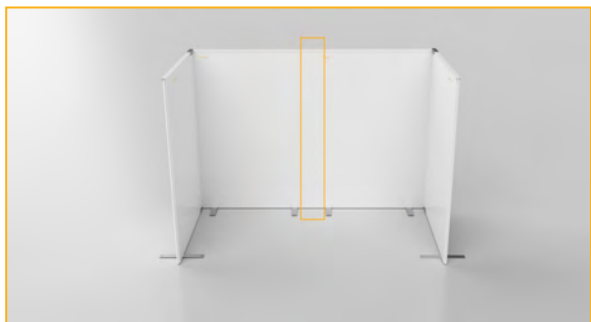
- Repeat this process for the opposite wall.



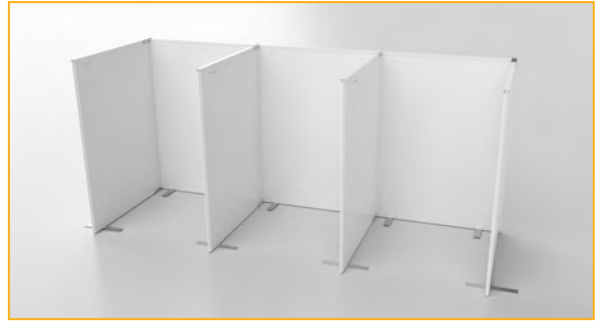
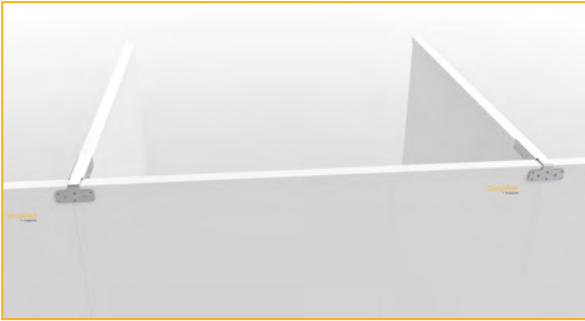
Once you have installed the U-clip at the top and bottom of the walls you completed the Basic U-shape configuration.



Also, the tongue and groove feature on the pre-assembled walls can be used to inter-connect the TempWalls into double, triple, or multi U configurations.



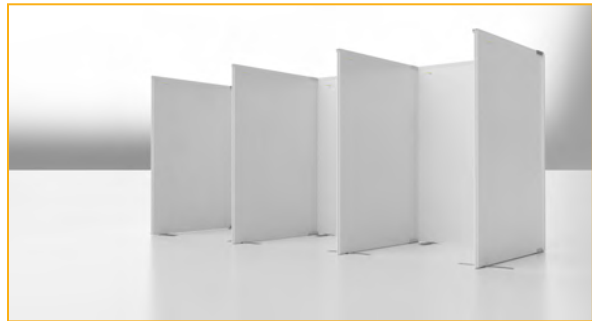
For different configurations T-clips can be used.



## Possible Configurations



Basic U-Shape



Multi U-Shape



Zig-Zag



L-Shape



Double U-Shape



Stand Alone

**More Resources Available Through Your Regional Distributor:** Octaform Systems Inc.

James Carter, Healthcare Solutions Technical Lead, Octaform | [james.carter@octaform.com](mailto:james.carter@octaform.com) | cell: 778-997-3031